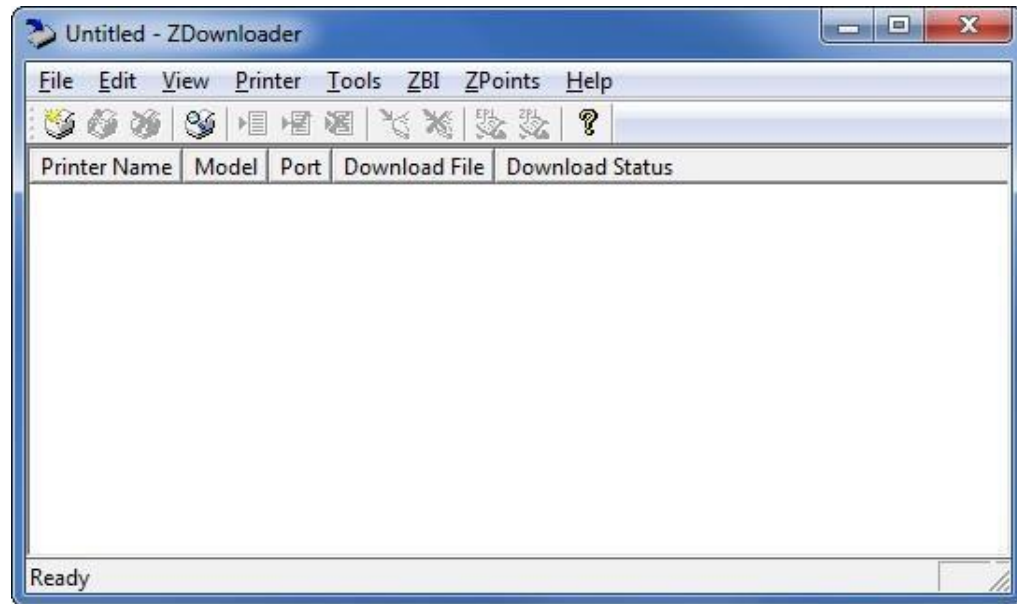


Downloading & Enabling the PDF Direct App Using ZDownloader

The ZDownloader application can download and enable the PDF Direct app on Zebra printers that are running Link-OS v6.3 or later – and are connected by RS-232, Parallel, USB and Networks connections.

Figure 1 • Initial ZDownloader Screen



Adding Printers to the ZDownloader List

There are two ways to add printers to the list:

- **Auto-Detect** (use for USB or IP Ethernet interfaces)
- **Manual Add** (use for RS-232, Parallel, or IP Ethernet interfaces)

If your printer is connecting via the serial or parallel interfaces, or is not detected by using the **Auto-Detect** method, use the **Manual Add** method.

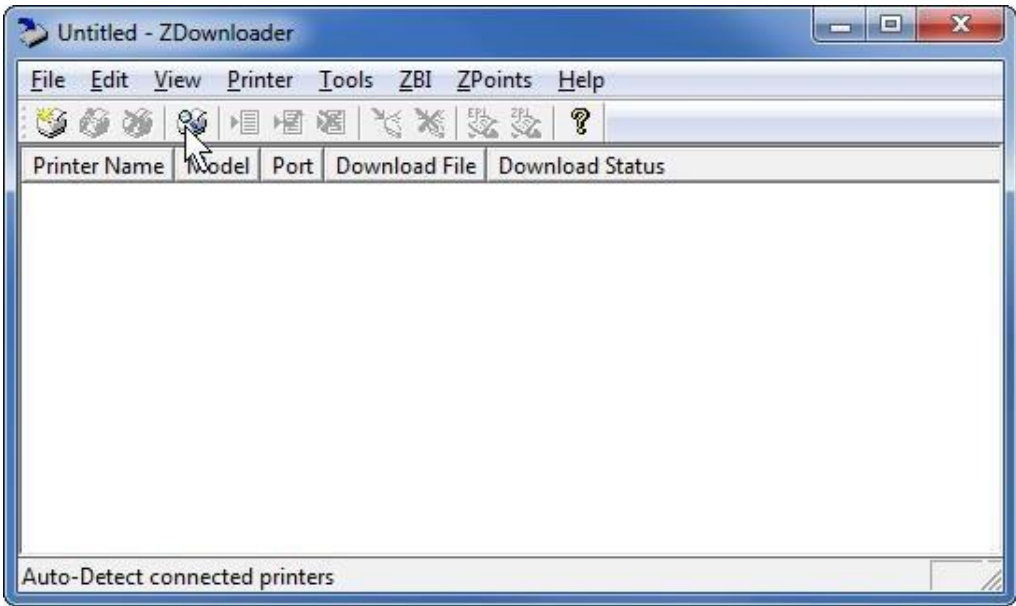
Auto-Detect Printers

Use **Auto-Detect** for USB or IP Ethernet interfaces.




Note • Ethernet connected printers are detected by the application broadcasting a UDP packet out onto the network. UDP port number 4201 is used for the discovery process. Some networks filter out UDP packets. This means that the ZDownloader program may not be able to detect all the printers on your network. See your network administrator for more information. If you are not able to Auto-Detect your network printers, follow instructions for manually adding a printer.

USB printers can only be added by using Auto-Detect. The ZDownloader program can support as many USB printers as your computer can support (most computers typically can support up to 255).



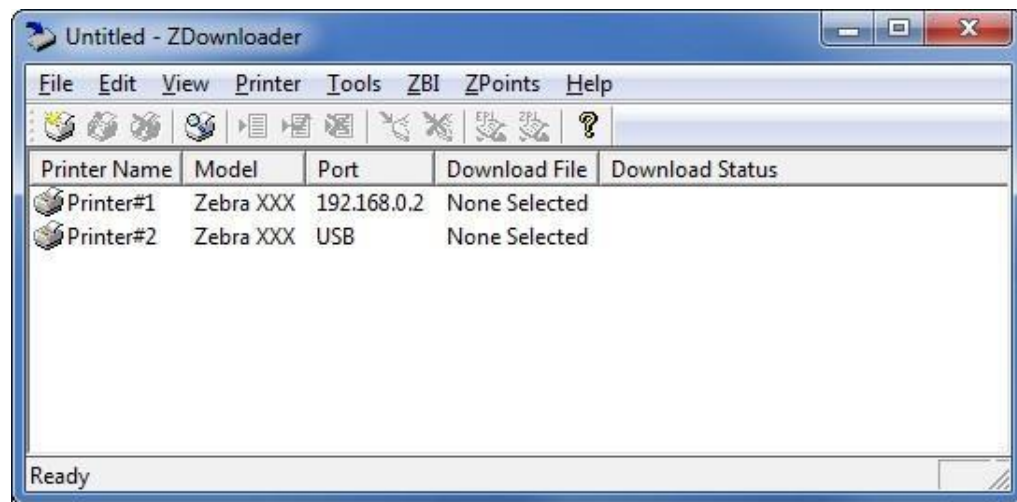
To Auto-Detect printers connected via the USB or IP Ethernet interfaces, perform the following steps:

1. In the ZDownloader toolbar, click the “Auto-Detect” button .

OR


Right-click in the ZDownloader window and select “Auto-Detect Printers.”

The printers detected are added to the printer list.



Manually Add Printers

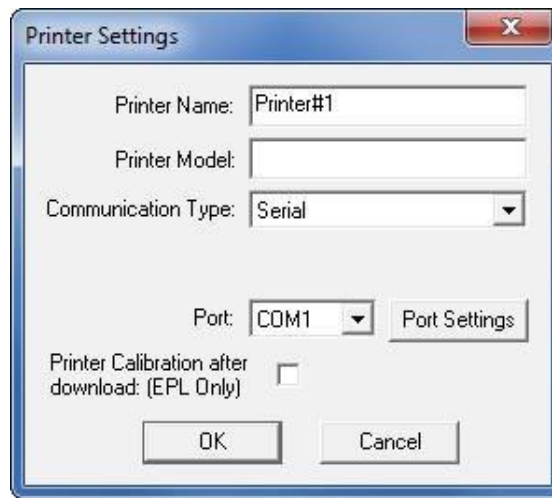
To manually add printers connected via the RS-232, Parallel, or IP Ethernet interfaces, perform the following steps:

1. In the ZDownloader toolbar, click the “Add Printer” button .

OR

Right-click in the ZDownloader window and select “Add Printer...”.

The following window appears.



The image shows a 'Printer Settings' dialog box with a blue title bar and a red close button. It contains several input fields and buttons. The 'Printer Name' field is pre-filled with 'Printer#1'. The 'Printer Model' field is empty. The 'Communication Type' is set to 'Serial' in a dropdown menu. The 'Port' is set to 'COM1' in a dropdown menu, with a 'Port Settings' button next to it. There is a checkbox for 'Printer Calibration after download: (EPL Only)' which is currently unchecked. At the bottom are 'OK' and 'Cancel' buttons.

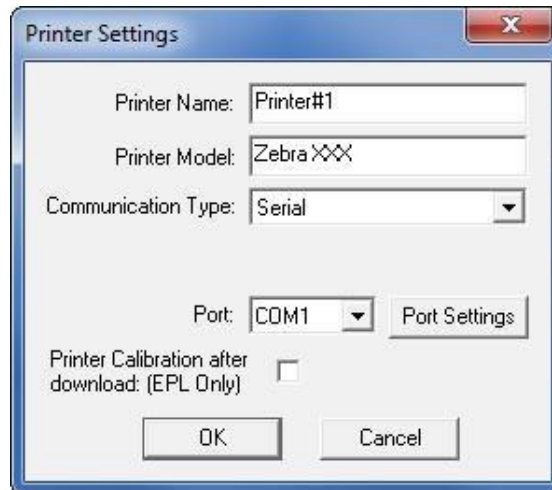
Printer Name:	Printer#1	
Printer Model:		
Communication Type:	Serial	
Port:	COM1	Port Settings
Printer Calibration after download: (EPL Only)	<input type="checkbox"/>	
OK Cancel		

2. Add a printer name and your printer model in the appropriate fields
-

Adding an RS-232 Printer

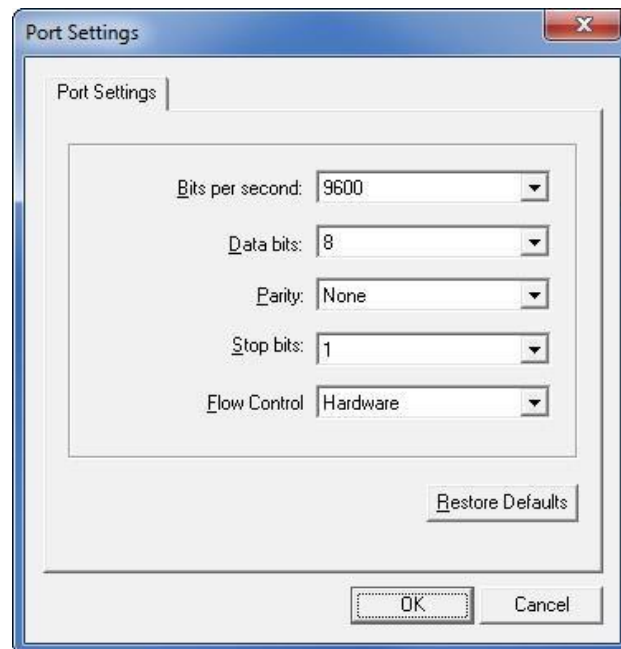
If you will not be adding a serial printer, skip to step 8 to install a parallel printer or step 11 to install a network printer.

3. Select the serial port to which the printer is connected.



4. Click Port Settings.

The following window appears.



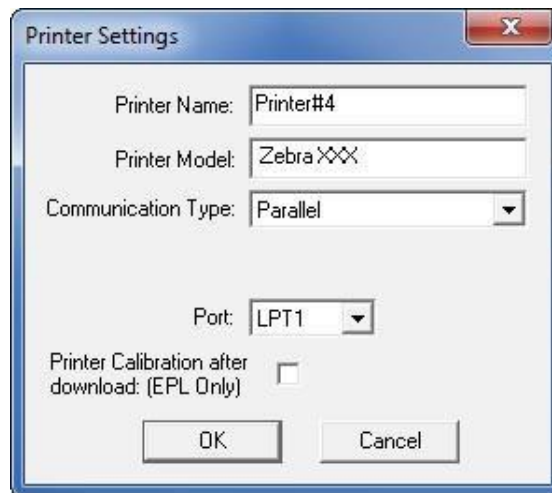
5. Adjust the settings, as necessary. The printer's serial port settings must match the computer's serial port settings. For more information about the settings, refer to the User Guide for your printer.
 6. Click OK to save the port settings.
 7. Click OK to add the printer.
-

Adding a Parallel Printer

If you will not be adding a parallel printer, skip to step 11 to install a network printer.

8. Select the Parallel Communication Type.

The available parallel ports will be shown in the Port drop-down box.



9. Select the port to which the printer is connected. No additional configuration is necessary.

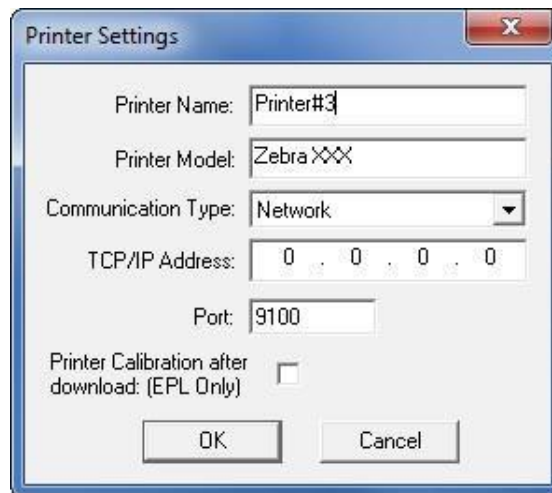
10. Click OK to add the printer.

Adding a Network Printer

11. Select the Network Communication Type.

12. Click Port Settings.

The following window appears.

A screenshot of a 'Printer Settings' dialog box. The dialog has a title bar with a close button (X). Inside, there are several input fields: 'Printer Name' with the text 'Printer#3', 'Printer Model' with 'Zebra XXX', 'Communication Type' with a dropdown menu showing 'Network', 'TCP/IP Address' with four input boxes each containing '0', and 'Port' with '9100'. There is also a checkbox labeled 'Printer Calibration after download: (EPL Only)' which is currently unchecked. At the bottom are 'OK' and 'Cancel' buttons.

Printer Settings

Printer Name: Printer#3

Printer Model: Zebra XXX

Communication Type: Network

TCP/IP Address: 0 . 0 . 0 . 0

Port: 9100

Printer Calibration after download: (EPL Only) ☐

OK Cancel

13. Enter the printer's IP address.

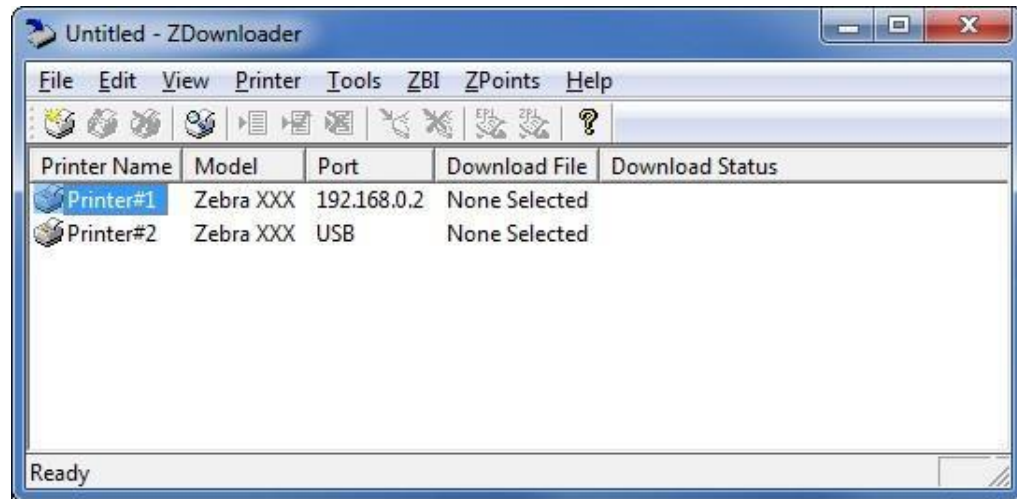
14. Click OK to save the network settings.

15. Click OK to add the printer.

Modifying Printers in the List

To change printer settings for a printer in the list, perform the following steps:

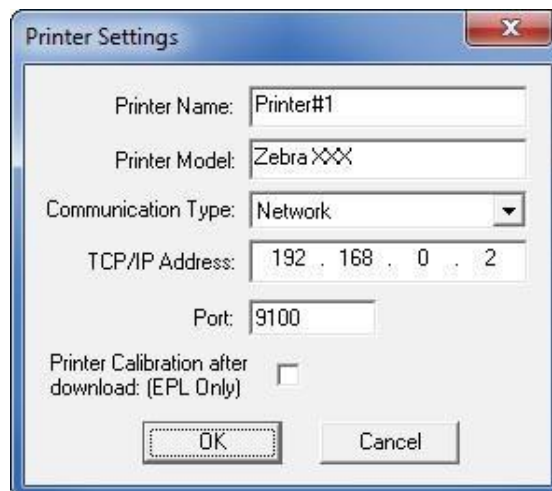
1. Select the printer to modify.



2. In the toolbar, click the “Modify Printer” button .

OR

Right-click on the printer and select “Modify Printer...”. The printer settings for the selected printer are displayed.

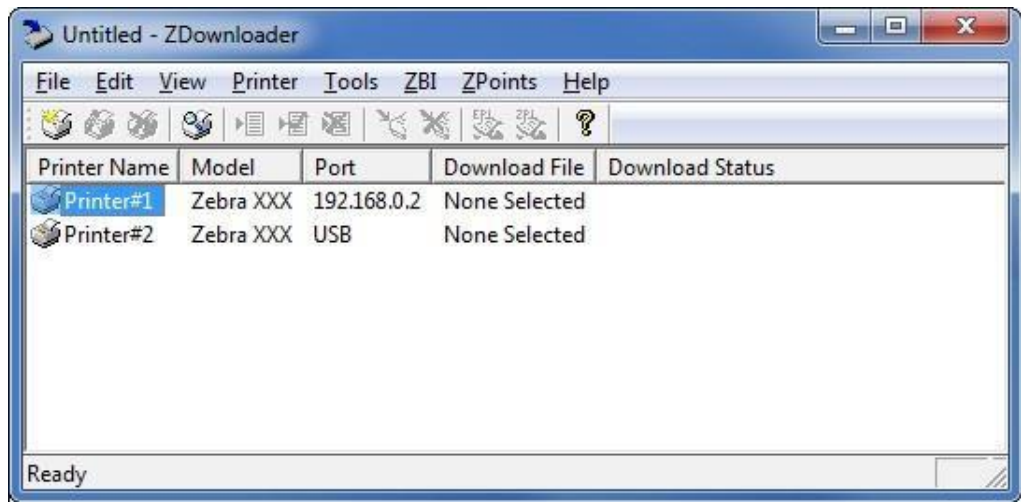



3. Modify the settings as desired.
4. Click OK to save the settings.

Deleting Printers from the List

To delete printers from the list, perform the following steps:

- 1. Select one or more printers to delete.

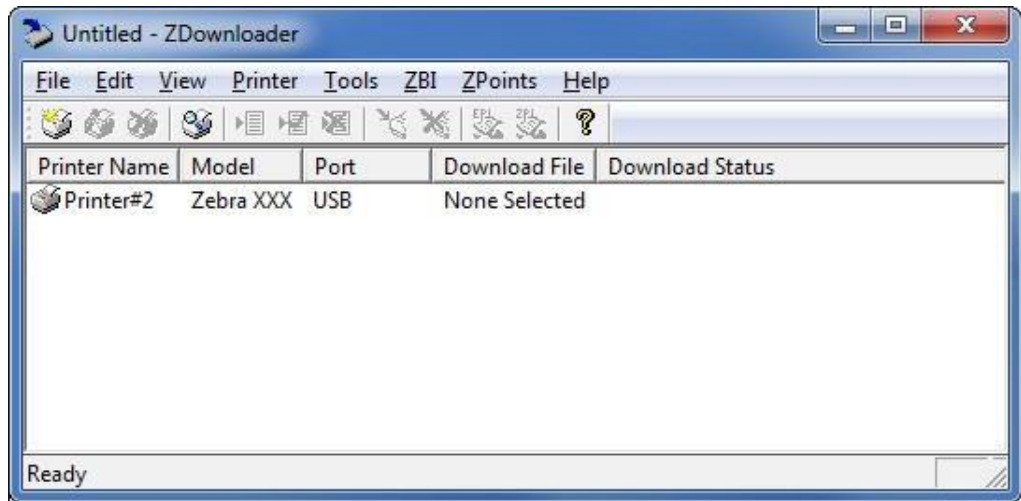


- 2. Click the "Delete Printer(s)" toolbar button .

OR

Right-click on one of the selected printers and select "Delete Printer(s)".

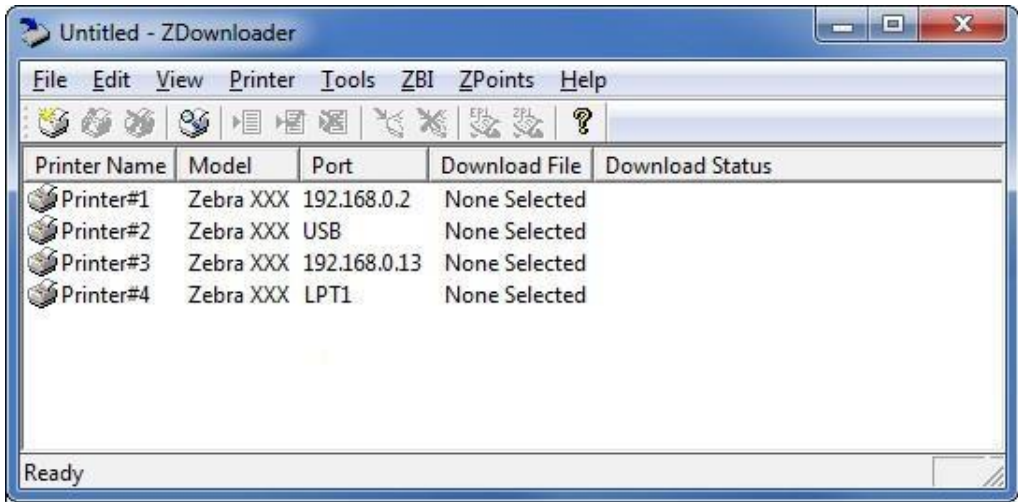
The printer is removed from the list.



Downloading the PDF Direct App to Selected Printers

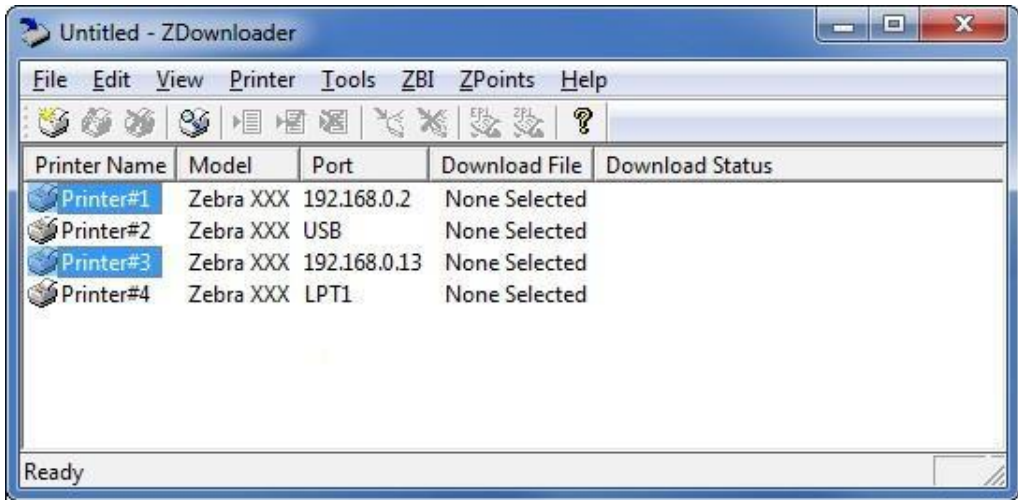
To download the app to your printer(s), you must select and send the app installation file to each printer.


Figure 2 • ZDownloader Screen with Multiple Printers Added



To download the PDF Direct app file to one or more printers, perform the following steps:

- 1. Select the printers you want to download the PDF Direct app file to. To select multiple printers, hold down the Ctrl or Shift key, and then click on the desired printers.



- 2. Click the “Select Firmware” toolbar button .

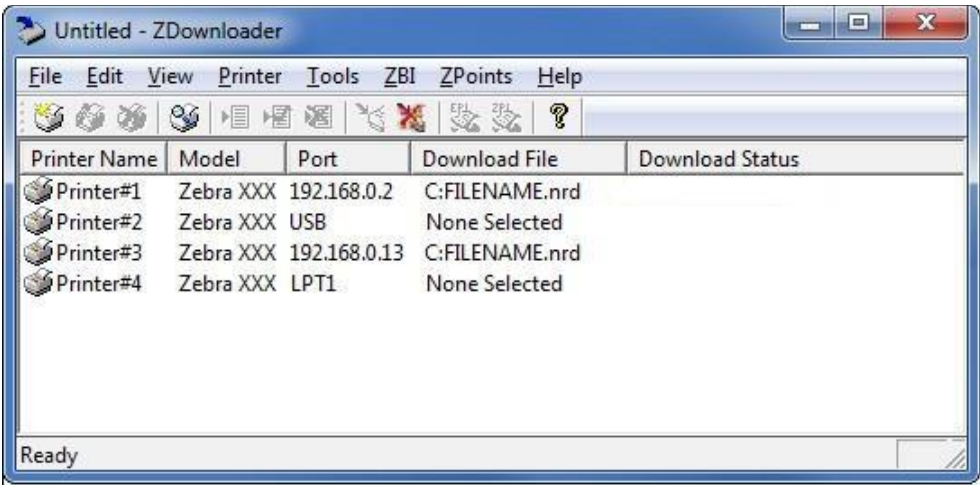
OR

Right-click on one of the selected printers and select “Select Firmware File.”

- 3. Navigate to the PDF Direct app file. This is a file with an .nrd extension. An example file name would be “PDF Direct-v206.NRD”, indicating the app and version of that app to be sent to the printer(s).

4. Click Open.

After that, the file you selected appears under Download File for the selected printers. Printers that are present in the list, but do not have a file selected will be ignored when Downloading starts.



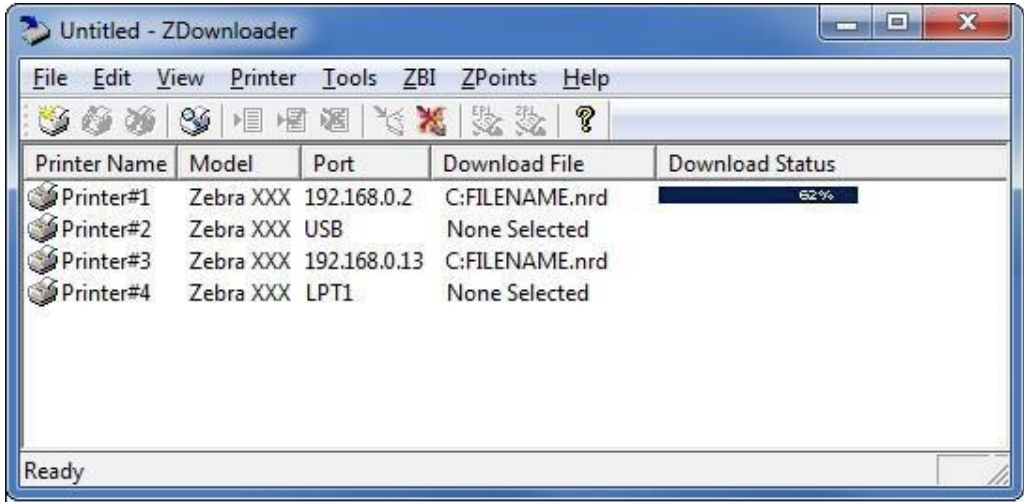
5. Click the “Download to All Printers” toolbar button.



OR

Select the printer(s) of interest and select “Printer > Download To Selected.”


After downloading has begun, the progress of each printer will be shown in the “Download Status” column.



Canceling a Download in Progress

The “Cancel Download” toolbar button and the “Printer > Cancel Download” menu options become active when the files are downloading.

To cancel downloading to ALL printers in the list, perform the following step:

1. Click the “Cancel Download” toolbar button .

OR

Right-click in the ZDownloader window and select “Cancel Download.”

To cancel downloading to SPECIFIC printers in the list, perform the following step:

1. Select one or more printers with a download in progress.

2. Click “Printer > Cancel Download.”

OR

Right-click on a selected printer and select “Cancel Download.”

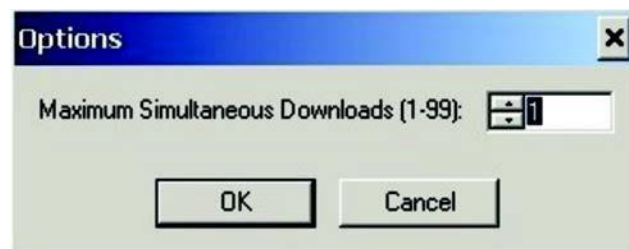
Allowing Simultaneous Downloads

ZDownloader, by default, downloads files to one printer at a time. If you have multiple printers to update and want to speed up the process, you can increase the number of simultaneous downloads.

To allow simultaneous downloads, perform the following step:

1. Click “Tools > Options...”

The following prompt appears.



2. Raise the number shown to allow multiple simultaneous downloads.



Note • More simultaneous downloads require more of your computer resources. Some computers may slow down with simultaneous downloads or as more printers are added for simultaneous downloading

Enabling, Disabling and Deleting the PDF Direct app

You can enable PDF Direct by sending a Set/Get/Do (SGD) command to the printer or by selecting the option through the printer's menus on models that have a control panel display.



Note • ZPL, EPL and CPCL may not function normally when PDF Direct is enabled.

Using an SGD Command

To enable PDF Direct on any supported printer where the app has already been downloaded to the printer, send the following command:

```
! U1 setvar "apl. enable" "pdf"
```

To disable PDF Direct on your printer and return to normal function, send the following command:

```
! U1 setvar "apl.enable" "none"
```

You must restart the printer after changing the value of apl.enable.

To delete PDF direct from the printer, send the following command:

```
! U1 do "file.delete" "PDF.APL"
```

Using the User Menus

This section includes instructions for enabling PDF Direct on the following printers, which have non-touch display screens:

- *ZQ600 series printers*
- *ZD500, ZD600 series printers*
- *ZT230, ZT400, ZT500, ZT600 series printer*

If necessary, refer to the User Guide for your printer for additional information about your printer's control panel.

ZQ600 Series Printers

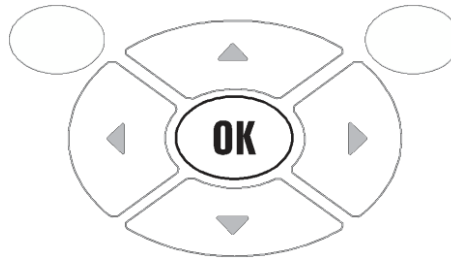
1. From the printer's idle display screen, press the LEFT SOFT KEY to select the Home icon.



The printer displays the Home Menu.



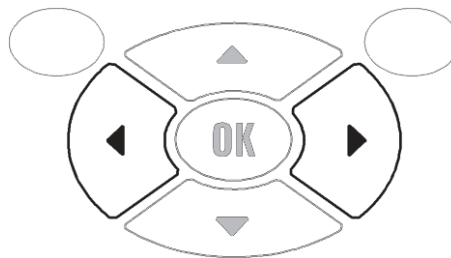
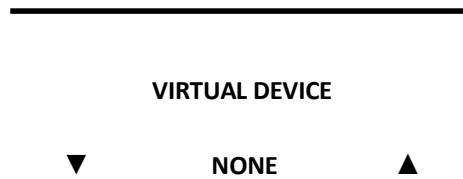
3. Press the OK button.



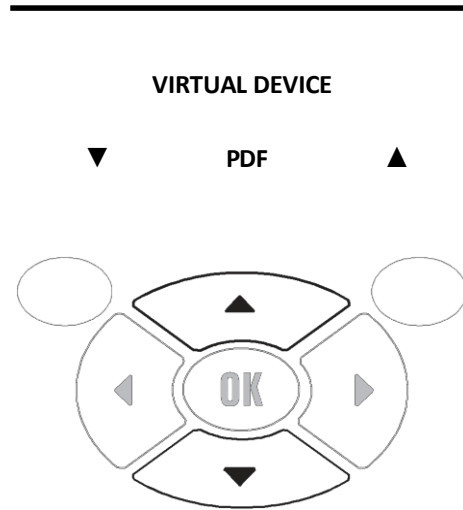
The printer displays the LANGUAGE selection screen.



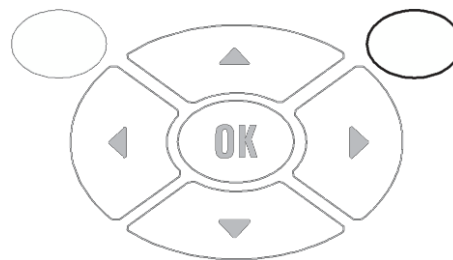
4. Use the LEFT or RIGHT ARROW to navigate to the VIRTUAL DEVICE selection screen.



5. Use the UP or DOWN ARROW to scroll to the APL-P option.



6. Press the RIGHT SOFT KEY to select USE.



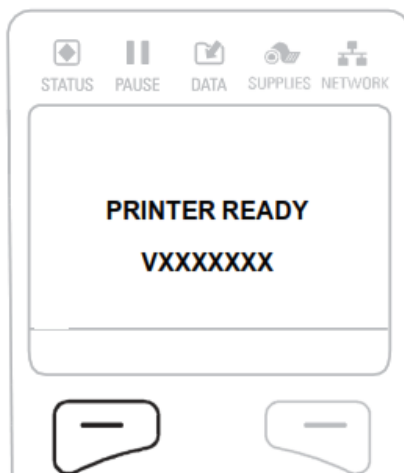
The printer restarts and uses the PDF Direct app that you selected.

ZD500, ZD600, ZT230, ZT400, ZT500 and ZT600 Series Printers with a non-touch screen

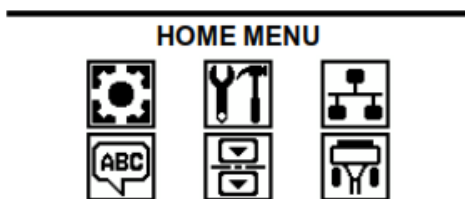


Note • The ZD500, ZD600, ZT230, ZT400, ZT500, ZT600 non-touch control panel is shown in this procedure.

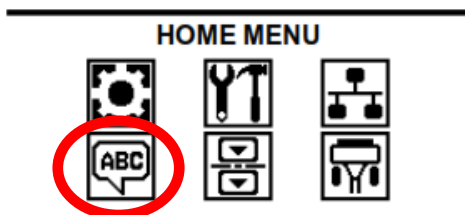
1. From the printer's idle display screen, press the LEFT SELECT KEY to select the Home icon.



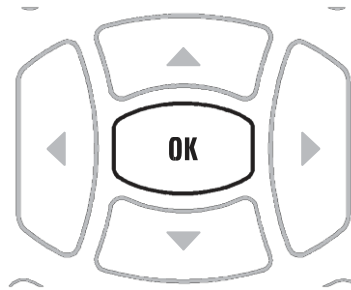
The printer displays the Home Menu.



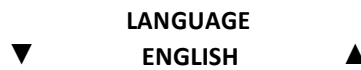
2. Use the ARROWS to navigate to the LANGUAGE menu.



3. Press the OK button.



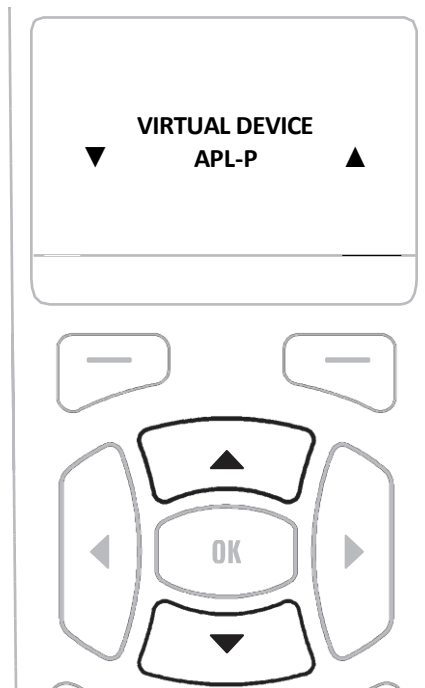
The printer displays the LANGUAGE selection screen.



4. Use the LEFT or RIGHT ARROW to navigate to the VIRTUAL DEVICE selection screen.



5. Use the UP or DOWN ARROW to scroll to the APL-P option.



6. Press the RIGHT SOFT KEY or OK to select USE.



The printer restarts and uses the PDFDirect app you selected.

ZT400 and ZT600 Series Printers with a touch screen

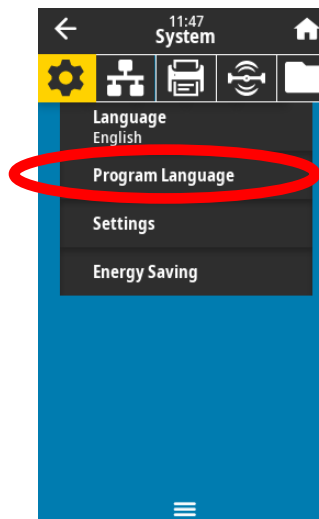


Note • The ZT400, ZT600 touch control panel design is shown in this procedure.

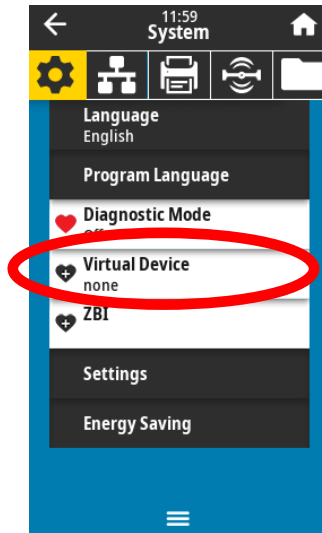
1. From the printer's HOME screen, touch the **Menu** icon:



2. From the System screen, touch the **Program Language** button:



3. From the Program Language menu, select Virtual Device:



4. From the Virtual Device menu, select PDF. The printer will restart after this selection is made. When the printer completes restarting, it will be running the PDF Direct app.

