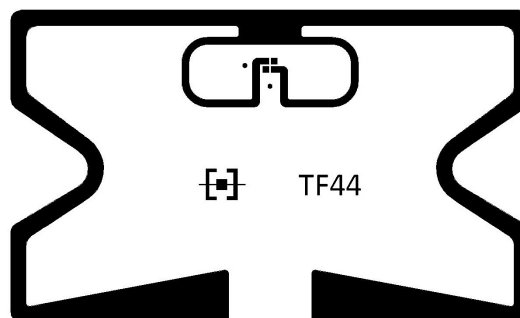


TF44 MCM



PROTOCOL:	EPC Class 1 Gen 2 / ISO 18000-6C
OPERATING FREQUENCY:	Global 860-960 Mhz
ANTENNA SIZE:	50 x 30 mm
INTEGRATED CIRCUIT:	Impinj Monza 4D/4E/4QT
EPC MEMORY:	From 128 bits to 496 bits
USER MEMORY:	From 32 bits to 512 bits

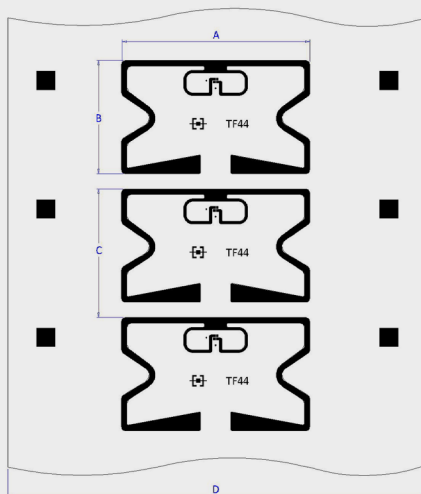


TF44 MCM COMMON APPLICATIONS

- Brand protection
- Apparel

INLAY GENERAL DIMENSIONS

DRY INLAY

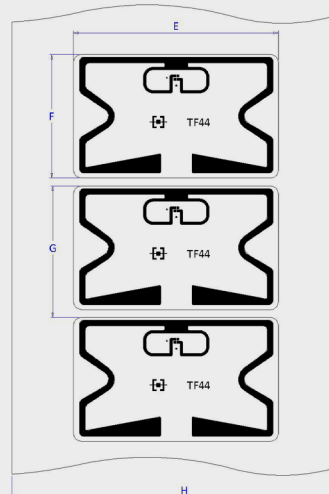


A- Inlay Width	50 mm
B- Inlay Length	30 mm
C- Inlay Pitch	34 mm
D- Web Width	110 mm

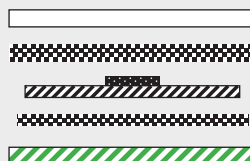


DRY INLAY = 50 µm PET + 150 µm die

WET/WHITE-WET INLAY



E- Label Width	53 mm
F- Label Length	32 mm
G- Label Pitch	34 mm
H- Web Width	85 mm



OVERLAY (White-wet)
ADHESIVE (White-wet)
DRY INLAY
ADHESIVE
RELEASE LINER

GENERAL CHARACTERISTICS OF INLAY

Operating Temperature Range

-40° C to +85° C at 40-80% RH

Storage Temperature

-40° C to +85° C at 40-80% RH

Electrostatic Discharge (ESD) tolerance

2.000V HBM (Human Body Model)

REEL DETAILS

Inner core diameter

76 mm

Outer core diameter

190 mm

Bending Diameter

≥ 50mm, tension less than 10 N

Average # of units per roll

3.000 pieces

Quality

100% performance tested

Available formats

Dry, wet, tag

CARE AND HANDLING: RFID inlays are sensitive to ESD. Observe standard practices to keep environmental static charge to a minimum.

APPLICATIONS: This product should be tested by the customer/user thoroughly under end use conditions to ensure the product meets the particular requirements.

PRODUCT CHANGES: Trace-Tech Id Solutions reserves the right to modify, change, supplement or discontinue product offerings at any time without notice.