



ZEBRA
CAPTURE
YOUR EDGE



Maximize Visibility Through Zebra's End-to-End Solutions

As the global leader in RFID technologies, Zebra delivers the largest number of in-stock, on-demand RFID printing supplies, featuring the newest generation of RFID chips to support faster tag inventory and longer read ranges.

Zebra RFID solutions can benefit every vertical segment by providing the real-time visibility you need to streamline operations, minimize errors in asset-related data, as well as track, identify, and maximize asset utilization. Only Zebra provides everything you need to implement RFID in your organization.

With Zebra's RFID label manufacturing capabilities, Zebra offers end-to-end RFID solution simplicity—carefully pre-tested supplies; access to a broad portfolio of Zebra RFID printers and readers; and the industry-leading expertise to customize how you maximize the benefits of RFID for your enterprise.

Zebra Takes the Complexity Out of Selecting the Right RFID Supplies

There are several factors to consider when selecting RFID labels, but these three are the most important:

- **Inlay Size.** A larger RFID inlay gives you longer read ranges.
- **Reader Type.** Handheld, fixed and overhead readers often perform differently and serve different use cases.
- **Material Surface and Environment.** Surface of the material, such as corrugate box, wood, glass, plastic, metal, etc., as well as how densely items are stacked, or what is contained within the boxes. If the signal must pass through objects that attenuate the signal, the read range is diminished.

**Faster Tag
Acquisitions
and Longer
Read Ranges**

50+ ZipShip RFID configurations with the highest performing RFID chips in the market in stock and ready to ship in 24 hours.

Not Sure What RFID Label Is Right for Your Application?

Let Zebra help you take guessing out of your decision

Leveraging Zebra's RFID expertise and manufacturing, Zebra RFID supplies are pre-tested with Zebra printers and readers to ensure industry-leading performance. We can quickly recommend the optimal RFID label, inlay technology, application, and placement.

Label Solution

Your application will enable us to recommend the material and adhesive you need, and the type of label and tag that could withstand exposure to extreme cold, heat, moisture, UV light, etc.

Right Chip Selection

We can determine whether a standard or high memory tag will work best, and the level of privacy protection or encryption your application requires.

Application Environment

Our recommendation of the best type and size of label is based on the analysis of your actual environment, whether it is RF friendly, or your labeling surface is metal or in contact with liquids.

Zebra-Branded Inlays

Zebra-branded inlays deliver market-leading performance to maximize the benefits of RFID for your enterprise.

Zebra's ZBR2000 and ZBR4000 inlays have successfully passed Auburn University's ARC program testing.



ZEBRA CERTIFIED SUPPLIES

Exceptionally Consistent and Consistently Exceptional

1



Consistently Outstanding Quality

- Familiar and proven label materials with best of breed RFID tags
- Never substitute materials or compromise consistency

2



Exceptional Service

- Supplies in stock ready for immediate dispatch
- Offer consultation
- Ability to create customized RFID labels to meet your applications requirements

3



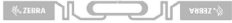
Unmatched Expertise

- 25+ years of technology innovation
- 575+ RFID Patents
- Many firsts in RFID: Portal, Mobile, Handheld, Multi-protocol

Zebra Offers a Wide Selection of In-Stock RFID Labels

Designed for and tested with Zebra printers and RFID readers

General Purpose



These RFID labels are designed for use with RFID readers and are stocked in a variety of inlay types and sizes. They are available in paper and synthetic materials that work on non-metallic surfaces, plastics or corrugate and feature inlays from leading providers, as well as Zebra-branded.

ZBR2000 Zebra-Branded Inlay: High sensitivity with a read range up to 17m in free space to deliver consistent, reliable performance and help you achieve a better ROI.

Advanced



These advanced RFID labels offer a higher level of read performance than our general-purpose labels for use where longer ranges are required and feature inlays from leading providers, as well as Zebra-branded. Provides efficient performance when placed on or near challenging materials, with omni-directional readability from almost any angle.

ZBR4000 Zebra-Branded Inlay: Standard 128-bit memory inlay with a read range of up to 20m.

ZBR4001 Zebra-Branded Inlay: Enhanced 448-bit EPC and 1024-bit user memory inlay with a read range of up to 12m.

General Purpose and Advanced Applications	T&L	Manufacturing	Healthcare
	Distribution, shipping and receiving, warehouse operations including case, pallet and cross-docking applications	Work-in-process, product labeling, product ID/serial numbers, security and product lifecycle tagging	Patient ID, specimen, laboratory and pharmacy labeling, document and patient records management

Specialty



Zebra offers a variety of solutions to ensure readability on metal and challenging surfaces.

Flag Designs: Distances the inlay from the metal surface or works with the metal asset to provide reliable readability.

Silverline Labels: Spacer between tags, slotted groundplane, permanent adhesive, durable facestock. They are thin, flexible, printable on-demand, and work directly on metal.

Encapsulated Tags: Inlay inserted between two tag materials for applications where adhesive is not needed.

Specialty Applications	T&L	Manufacturing	Retail	Healthcare
	Fleet management; metal and liquid-filled containers	Asset tracking of tools, fixtures, metal parts, returnable containers, chemical drums and more	Asset tracking of mobile computers, printers, antennas and infrastructure components	Asset tracking of wheelchairs, beds, oxygen canisters, IV pumps and medical diagnostic tools

Custom RFID Labeling Solutions

With our state-of-the-art presses and RFID manufacturing equipment, Zebra can create a customized RFID labeling solution to meet the unique requirements of your application:

- Any label size and configuration
- Hundreds of pre-tested materials to choose from
- Pre-printed with color floodcoats, graphics and logos
- All leading inlay brands, such as Zebra, Alien, AveryDennison, Smartrac, BoingTech, Tageos, Stora Enso
- All leading tag IC manufacturers, such as NXP, Impinj, Alien, EM Micro

Zebra RFID Portfolio At-a-Glance



Where is RFID Headed Next?

Which new advances will help your organization operate even more efficiently? Rely on Zebra to lead the way. Its innovative spirit and years of deep RFID experience enable Zebra to work ahead of the curve to fulfill a wide range of evolving market requirements. Zebra has played a central role in pioneering RFID technologies and defining global standards since the mid-1990's, when smart-label technology first appeared. For industry-leading quality, service and RFID thermal printing expertise, choose Zebra Certified Supplies.

For more information, visit www.zebra.com/supplies



NA and Corporate Headquarters
+1 800 423 0442
inquiry4@zebra.com

Asia-Pacific Headquarters
+65 6858 0722
contact.apac@zebra.com

EMEA Headquarters
zebra.com/locations
contact.emea@zebra.com

Latin America Headquarters
+1 786 245 3934
la.contactme@zebra.com