

# 2500 Series

## Handheld Scanners

*Corded 2504SR/ 2504MR*

*Cordless 2564SR/ 2564MR/ 2564ER*



# NEW Extended Range Rugged Edition

Date: February 01, 2023

# Excellent Reading Performance

## New Extended-Range Scanner

The 2504 / 2564 Series are equipped with SE4850ER engine supporting scanning range from 4 cm up to 21.3 meters, offering flexibility for scanning barcodes on high shelves or at close range.





# Durable Protection

## IP65 Sealing

Dustproof and water-resistance extend product life cycles in harsh settings, such as warehouse forklift applications or unloading stocks at docks.

## 1.8m Drop Resistance

Prevent accidental drops due to users' carelessness and reduce downtime in time-critical applications, such as inventory management and product assembly.

**Only 2564ER comes with a  
Military-grade Protective Cover**



# Durable Design

## Tether Plate

### Pull Strength Test

Passed the 10kg pull strength test

### Pull Life Test

Passed 30,000 times of 1.5kgf pull force

The durable tether plate tied with a cord will not break even when tugging the scanner during forklift operation.



# Extended Battery Capacity

## 3000 mAh Swappable Battery

The 2564SR / 2564MR offers up to 75 hours of continuous operation, and the 2564ER is up to 24 hours, ideal for long-running applications.

*e.g. 24/7 convenience stores, distribution centers and assembly lines.*





# Better User Experience



## Added Vibration Mode

Receiving confirmation via vibration instead of only an audio alert in a noisy environment reduces the chances of human error.

## Comfortable Operation Designs

Optional tether plate, communication cradle, and hands-free stand give users a more productive experience.

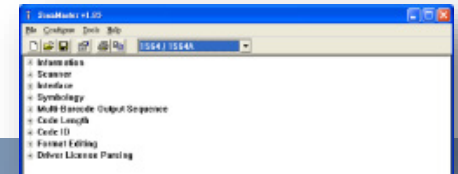
## Enhanced ESD protection

Handles ESD surges up to  $\pm 10\text{kV}$  (contact), and  $\pm 20\text{kV}$  (air), preventing damage to sensitive electronics from electrostatic discharge, especially in the electronics industry and production lines.



# Software Support

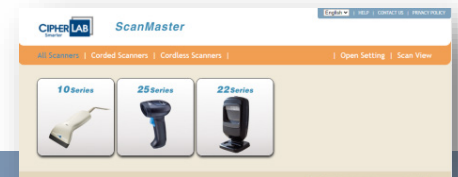
## ScanMaster



A utility to configure the 2500 Series Handheld Scanners for Windows PC. Generated barcode files can be saved, printed and shared for quick configuration.

<https://www.cipherlab.com/en/download-c2213/Utilities-Driver.html>

## Web-based ScanMaster



Web-based version of ScanMaster is available for cross-platform users (Win/Mac OS, Android/iOS).

<http://scanmaster.cipherlab.com/>

# Accessories

---



## **Stand<sup>1</sup>**

Hands-free stand with adjustable goose neck for different scanning angles



## **Battery Charger<sup>2</sup>**

Single battery charger for rechargeable batteries



## **Cradle**

Communicates with up to 7 Bluetooth® scanners

1. *Not applicable for 2564ER with protective cover*
2. *Compatible with RS35/RK25 UHF gun battery charger*



# Specifications Summary

Model		• 2504SR	• 2564SR	2504SR	2564SR	2504MR	2564MR	2564ER	
Category		SE4107		SE4750 SR		SE4750 MR		SE4850	
		Corded	Bluetooth® V4.0 Dual mode (2.1 + EDR/ BLE)	Corded	Bluetooth® V4.0 Dual mode (2.1 + EDR/ BLE)	Corded	Bluetooth® V4.0 Dual mode (2.1 + EDR/ BLE)	Bluetooth® V4.0 Dual mode (2.1 + EDR/ BLE)	
RF Communication of Bluetooth scanner	Coverage	-	100 m/ 328 ft. line of sight	-	100 m/ 328 ft. line of sight	-	100 m/ 328 ft. line of sight	100 m/ 328 ft. line of sight	
Performance	Optical sensor	CMOS Image Sensor 1280 x 960 pixels						CMOS Image Sensor 1280 x 800 pixels	
	Light source	Warm White LEDs (1x)		Warm White LEDs (2x)		Warm White LEDs (2x)		Hyper Red 660 nm LED	
	Resolution	3 mil: 1D barcode / 5 mil: 2D barcode		3 mil: 1D barcode / 5 mil: 2D barcode		3 mil: 1D barcode / 5 mil: 2D barcode		3 mil: 1D barcode / 5 mil: 2D barcode	
	Scanning angle	Pitch ± 60°, Skew ± 60°							
	Minimum PCS	20%							25%
	Scan rate	30 scans/second		60 scans/second				30 fps (Near) 55fps(Far)	
Physical	Weight (without cable/ with battery)	166g / 5.9 oz.	209g / 7.0 oz.	187g / 5.9 oz.	241g / 7.0 oz.	187g / 5.9 oz.	241g / 7.0 oz.	320.3g/ 11.3 oz.	
	Color	Black, Register White						Black	
	User Indicators			Vibration (adjustable), LEDs, beeper					
Electrical	Working hours for Bluetooth scanner	-	75 hours based on 1 scan / 5 seconds	-	75 hours based on 1 scan / 5 seconds	-	75 hours based on 1 scan / 5 seconds	24 hours based on 1 scan / 5 seconds	
User Environment	Impact resistance	1.8 m multiple drops onto concrete, 1000 (1 m) tumbles							
	Ingress protection	IP65							
	Electrostatic discharge	±10 kV contact ±20 kV air							
Warranty		3 years (engine 1 year)							



**THANK YOU.**