

**Datalogic S.r.l.**  
 Via San Vitalino 13  
 40012 Calderara di Reno (BO)  
 Italy  
 Tel. +39 051 3147011  
 Fax +39 051 3147205

©2017-2018 Datalogic S.p.A. and/or its affiliates

♦ All rights reserved. ♦ Without limiting the rights under copyright, no part of this documentation may be reproduced, stored in or introduced into a retrieval system, or transmitted in any form or by any means, or for any purpose, without the express written permission of Datalogic S.p.A. and/or its affiliates. Owners of Datalogic products are hereby granted a non-exclusive, revocable license to reproduce and transmit this documentation for the purchaser's own internal business purposes. Purchaser shall not remove or alter any proprietary notices, including copyright notices, contained in this documentation and shall ensure that all notices appear on any reproductions of the documentation. Should future revisions of this manual be published, you can acquire printed versions by contacting your Datalogic representative. Electronic versions may either be downloadable from the Datalogic website ([www.datalogic.com](http://www.datalogic.com)) or provided on appropriate media. If you visit our website and would like to make comments or suggestions about this or other Datalogic publications, please let us know via the "Contact Datalogic" page.

**Disclaimer**

Datalogic has taken reasonable measures to provide information in this manual that is complete and accurate, however, Datalogic reserves the right to change any specification at any time without prior notice.

Datalogic and the Datalogic logo are registered trademarks of Datalogic S.p.A. in many countries, including the U.S.A. and the E.U. The Joya logo is a trademark of Datalogic S.p.A. and/or its affiliates, registered in the U.S. and the E.U. All other trademarks and brands are property of their respective owners.

**Patents**

See [www.patents.datalogic.com](http://www.patents.datalogic.com) for patent list.

**Reference Documentation**

For further information regarding Joya Touch A6 refer to the SDK Help on-line and to the Joya Touch A6 User's Manual, downloadable from our website [www.datalogic.com](http://www.datalogic.com).

**Support Through the Website**

Datalogic provides several services as well as technical support through its website. Log on to [www.datalogic.com](http://www.datalogic.com) and click on the **SUPPORT** link which gives you access to: **Downloads** by selecting your product model from the dropdown list in the Search by Product field for specific Data Sheets, Manuals, Software & Utilities, and Drawings; **Repair Program** for On-Line Return Material Authorizations (RMAs) plus Repair Center contact information; **Customer Service** containing details about Maintenance Agreements; **Technical Support** through email or phone.

**Warranty Terms and Conditions**

The warranty period is 1 year for the device and 90 days for consumables (e.g. battery, power supply, cable etc.) from date of purchase at our company.



**Joya A6**  
 Multi-Purpose Device for Retail



**Quick Start Guide**



See the Safety & Regulatory Addendum included with your product for additional regulatory, safety and legal information.

©2017-2018 Datalogic S.p.A. and/or its affiliates. All rights reserved. Datalogic and the Datalogic logo are registered trademarks of Datalogic S.p.A. in many countries, including the U.S. and the E.U.



[www.datalogic.com](http://www.datalogic.com)

**Out of the Box**

The Joya Touch A6 package contains:

- Joya Touch A6 (device with battery included)
- Quick Start Guide
- Safety & Regulatory Addendum

Remove all the components from their packaging; check their integrity and compare them with all the packing documents.



Keep the original packaging for use when sending products to the technical assistance center. Damage caused by improper packaging is not covered under the warranty.

**General View**

**Front View**



**Back View**



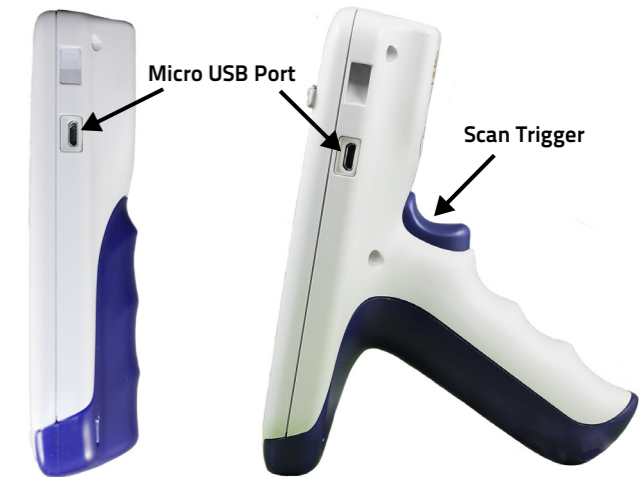
**Top View**



**Side View**

**Handheld Models**

**Pistol Grip Models**

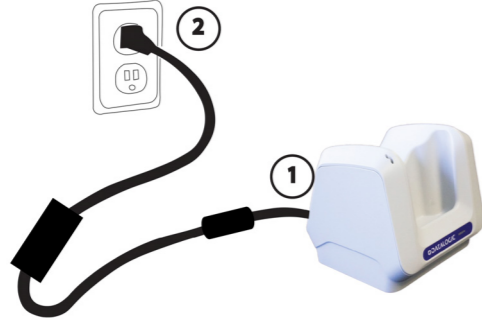


## Charging Instructions

The Joya Touch A6 is provided with the battery pack already installed and configured in Ship Mode at the factory. To wake the device from Ship Mode, connect it to a power supply or insert it into a dock (for more information, see the Getting Started section of the Joya Touch A6 User's Manual). The battery pack is initially not fully charged. Before using the device, charge the battery with the single slot dock locking, the single slot dock charge only, the 3-slot cradle or the Datalogic micro-USB power supply.

### Charge with the Single Slot Dock Locking

First plug the power cord into the power connector on the back of the dock, then connect the power cord to the power supply.



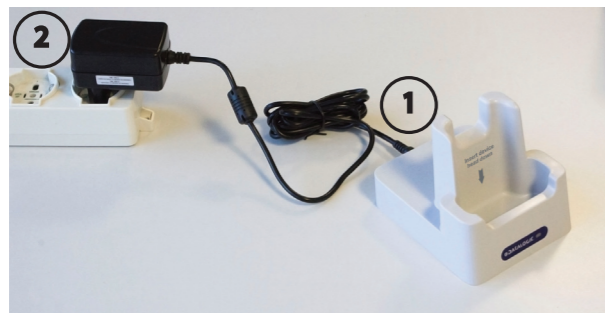
Use only the Datalogic power supply 91ACC0048 to power the Joya Touch Single Slot Dock Locking. The Single Slot Dock Locking cannot be daisy-chained to a Joya Touch 3-Slot Cradle.



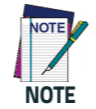
Insert the device into the dock with the screen facing front and the head facing down. For further information on the Joya Touch Single Slot Dock Locking, refer to the Single Slot Dock Locking Quick Start Guide, included in the dock's box.

### Charge with the Single Slot Dock Charge Only

First plug the power supply into the power jack on the back of the dock, then plug the power supply into a power outlet.



Use only the Datalogic power supply included in the box to power the Joya Touch Single Slot Dock Charge Only.



Insert the device into the dock with the screen facing front and the head facing down.

### Charge with the 3-Slot Cradle

There are two options to connect the cradle to the power supply: fast charge and standard charge.

#### Fast Charge

The fast charge connection allows to power one cradle with one power supply. Plug the power supply cable into the power connector on the back of the cradle, then plug the power supply into the AC/DC plug using a Datalogic power cable. Please see below an example of how to insert the power supply cable through the wall mounting metal bracket:



High Visibility



High Density

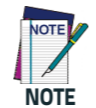
#### Standard Charge

The standard charge connection allows to power two cradles with one power supply. To connect a second cradle use the Joya Touch Cradle Power Jumper, available as optional accessory (P/N 91ACC0049).

1. Connect the first cradle to the second cradle using the power jumper.
2. Connect the power supply to the first cradle.
3. Plug the power supply into the AC/DC plug using a Datalogic power cable.



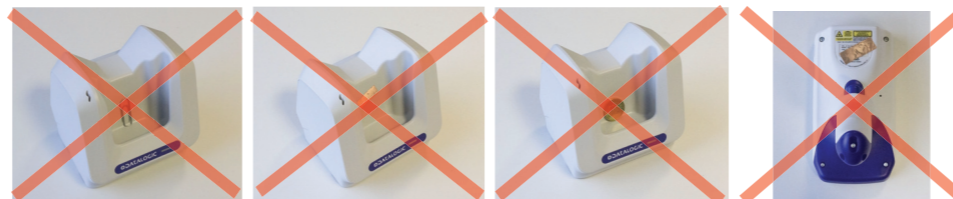
Use only the Datalogic power supply 91ACC0048 to power the Joya Touch 3-Slot Cradle.



Insert the device into the dock with the screen facing front and the head facing down. Under the same conditions, the fast charge connection can charge the battery up to twice as fast as the standard charge connection. For further information on the Joya Touch 3-Slot Cradle, refer to the Joya Touch 3-Slot Cradle Quick Start Guide, included in the cradle's box, and to the Joya Touch 3-Slot Cradle Installation Guide, downloadable from our website [www.datalogic.com](http://www.datalogic.com).

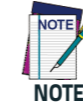
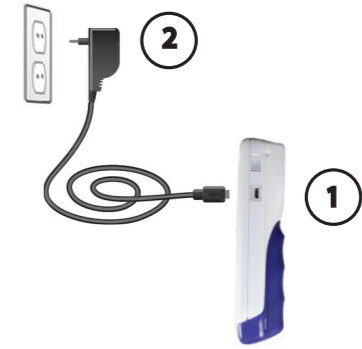


Do not put any foreign object such as, but not limited to, coins, paper clips, stickers inside the slot of any of the docks. Do not apply any sticker to the Joya Touch A6 (see the examples below).



## Charge with USB

Use the Datalogic micro-USB power supply (p/n 94ACC1380) to charge the terminal from a power outlet.



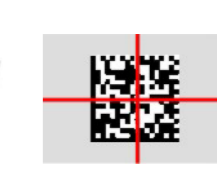
The Joya Touch A6 gets warm during charging. This is normal and does not mean a malfunction.

## Scanning and Imaging Imager Data Capture



LINEAR BARCODE

2D MATRIX SYMBOL



Relative Size and Location of Aiming System Pattern



AVOID EXPOSURE  
LASER LIGHT  
IS EMITTED FROM  
THIS APERTURE