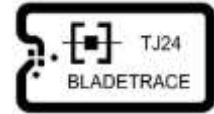


TJ24 Blade

UHF RFID Inlays



GENERAL CHARACTERISTICS:

Operating Frequency: Global (860 - 960MHz)

RF Protocol: ISO-18000-6C, EPC Class 1, Gen 2

Chip: IMPINJ Monza 4D/E/QT

EPC Memory: 128/496/128 bits

USER Memory: 32/128/512 bits

TID Memory: 96 bit, pre- encoded for multi- vendor chip (MCS) based serialization, factory programmed

COMMON APPLICATIONS:

- Security
- Cosmetic
- Pharmacy

FORMAT	DRY INLAY	WET INLAY
Antenna dimensions (CDxMD)	15 x 8mm [0.59 x 0.215 in]	15 x 8mm [0.59 x 0.215 in]
Die- cut dimensions	N/ A	25 x 10mm [0.984 x 0.394 in]
Inlay substrate material	PET	PET
Inlay- to- liner adhesive	N/ A	RC15 (UPM)
Liner material	N/ A	Honey Glassine 65 (UPM)
Face sheet	N/ A	White or clear Polypropylene / Vellum paper
Standard pitch	20.7mm [0.815 in]	20.7mm [0.815 in]
Standard web width	110mm [4.33 in]	40mm [1.574 in]
Total thickness over chip	177.8 - 203.2 microns	254 - 330.2 microns
Operating temperature	-40 to 85° C [-40 to 185°F]	-40 to 85° C [-40 to 185°F]
RoHS	EU Directive 2011/65 EU Compliant	EU Directive 2011/65 EU Compliant
Quality assurance	100% read tested with out- of- tolerance inlay marked	100% read tested with out- of- tolerance inlay marked
Un- wind direction	Inlay- side Out	Label side out
Core size with adaptor insert	152.4mm [6 in]	76.2 mm [3 in]
Maximum roll outer diameter (not to exceed)	431.8mm [17 in]	304.8mm [12 in]
Average # of units per roll	TBD	TBD

Minimum order quantity for customized labels, tickets, carelabels (textile labels): 10.000 pcs

CARE AND HANDLING RFID inlays are sensitive to ESD. Observe standard practices to keep environmental static charge to a minimum.

APPLICATIONS This product should be tested by the customer/ user thoroughly under end use conditions to ensure the product meets the particular requirements. Trace-ID does not represent that this product is fit for any particular purpose or use.

PRODUCT CHANGES Trace-ID reserves the right to modify, change, supplement or discontinue product offerings at any time without notice.

© 2016 Trace-tech Id Solutions S.L. . All rights reserved.