

Card
Printer

DC-240

Entrance to
professional card printing



HIGHLIGHTS AT A GLANCE:

- High resolution printing with 300 x 600 dpi
- Fast print speed up to 155 cards/hour for colour
- Edge-to-Edge printing
- Easy to use
- Compact design with small footprint



DASCOM[®]
SOLUTIONS FOR BUSINESS PRINTING

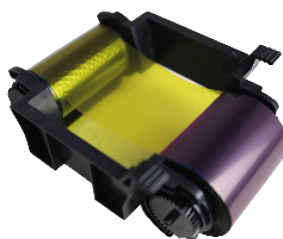
DC-240

The DASCOM DC-240 is a direct thermal card printer especially designed for front-desk applications. With a compact design this printer doesn't use much space on your desk but delivers fast and crisp results. With a resolution of up to 300 x 600 dpi fine details are visible and with a print speed of up to 155 cards/hour in colour even large print jobs can be done in a short time.

Thanks to Edge-to-Edge printing, the DC-240 is the perfect partner for employee ID, membership or loyalty cards. Easy exchangeable ribbons and an OLED display on the front informing about the actual status makes the daily work simple.

TECHNICAL DATA

Print Method	Direct thermal technology
Resolution	up to 300 x 600 dpi
Print Capability	Single Side only, Edge-to-Edge
Print Speed	Single Side: up to 155 cards/hour (YMCKO) or up to 775 cards/hour (Monochrome K)
Lifetime Print Head	30.000 Images
Interfaces	USB (2.0)
Card Thickness	0,25 - 1,1 mm (10 - 50 mil)
Security Features	RFID ribbon, custom watermarks (BMP)
Card Loading	Auto card feeder for 100 cards (0,76 mm thickness) Manual feed: single card
Card Output	25 cards (front side)
Card Types	PVC, PET, PET-G, ABS, Teslin® 85,6 x 53,98 mm (ISO ID-1/CR-80 size)
Consumables	Ribbon YMCKO (300 Images), Ribbon K (1.650 Images)
Cleaning Set	Cleaning Card Cleaning Roller
Physical Weight	6,2 kg
Physical Size	Single Side: 199 x 352 x 209 mm (W x D x H)
Power Voltage	Auto wide ranging, 100 - 240 V AC - 50/60 Hz
Environment	Printing: +15° to +35° C Temperature; 20 - 65% Humidity Storage: +5° C to +70° C Temperature; 20 - 70% Humidity
Driver	Windows 8/8.1/10/11
Warranty	For more details please contact your local dealer



Starter kits of 0.75mm PVC Plain Card (100 cards), 1 roll of YMCKO ribbon (300 images) and Card Editor Software inclusive inside